

**ACCESSIBILITY**

Directly connected to Quarry Bay MTR Station

**TYPICAL LETTABLE FLOOR AREA**

Approx. 13,900 - 15,250 sq ft (1,290 - 1,420 sqm)

**NO. OF OFFICE FLOORS**

36

**TYPICAL FINISHED FLOOR TO FALSE CEILING HEIGHT**

Approx. 2.53 m (8 ft 4 in)

**RAISED FLOOR VOID (CLEAR)**

Approx. 150 mm (6 in)



# PCCW TOWER

TAIKOO PLACE, 979 KING'S ROAD,  
QUARRY BAY, HONG KONG

**FLOOR LOADING**

Approx. 5 kPa (100 lbs / sq ft)

**TRUNKING**

Two-compartment under floor cableway,  
one-compartment ceiling trunking

**24-HOUR ACCESS**

Card Key system incorporated with the passenger lifts for  
controlling access to each office floor after office hours

**AIR-CONDITIONING**

Variable Air Volume system (VAV) with  
Direct Digital Control (DDC) and perimeter heating

**LIFTS**

12 passenger lifts and 1 service lift

**TENANTS' STANDBY ELECTRICAL PROVISION**

A 20 kVA per floor emergency provision is provided for  
tenants' essential applications and equipment

**COMPUTER ROOM COOLING**

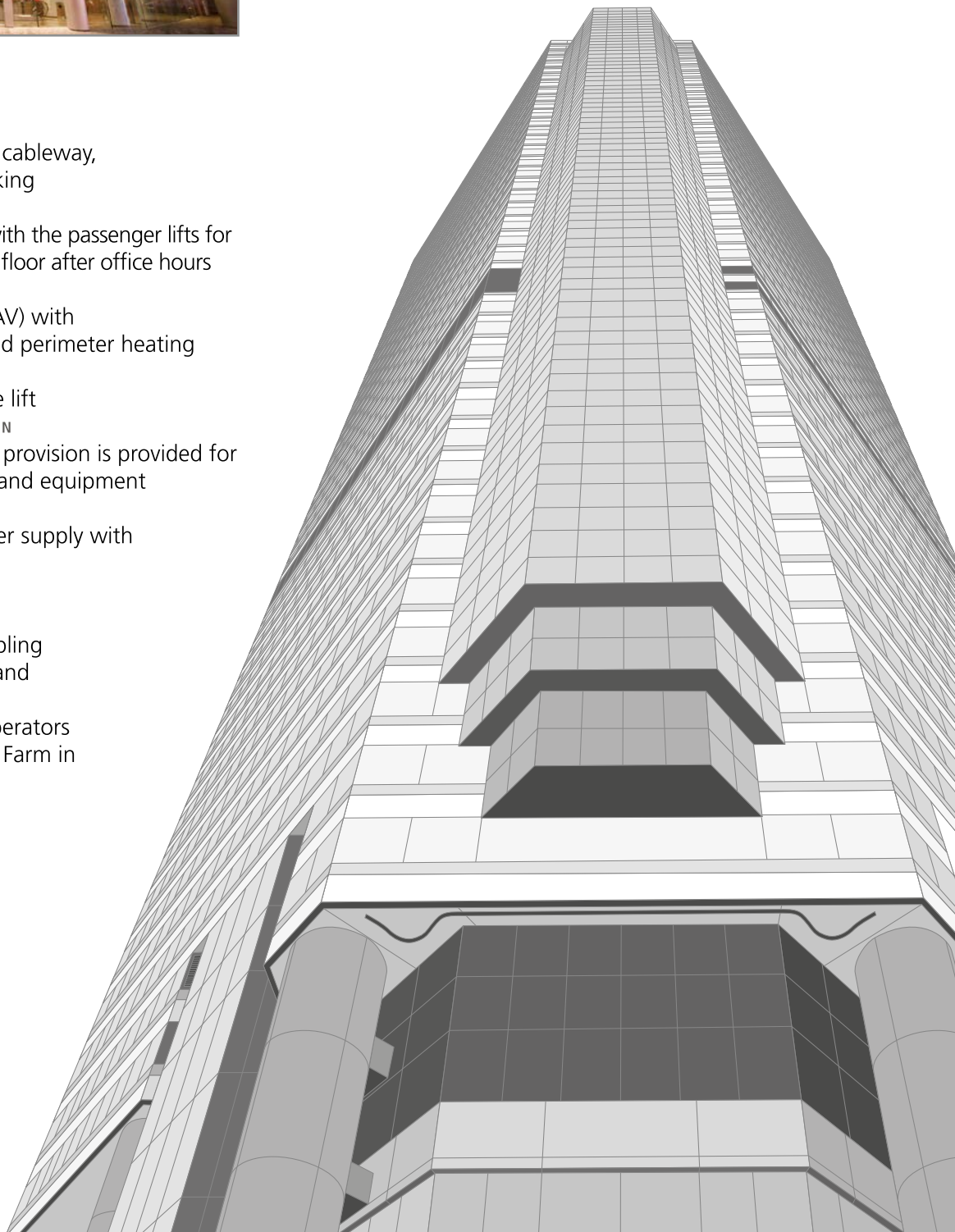
Dedicated 24-hour chilled water supply with  
back-up generator

**TELECOMMUNICATIONS PROVISIONS**

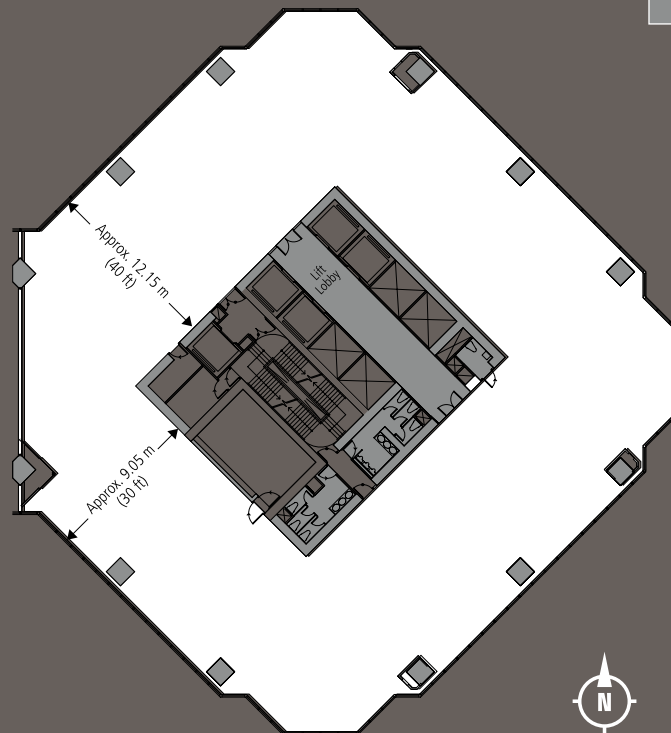
- Dual lead-ins and risers
- Full Cat.5 and fibre optic cabling
- Access to SMATV, cable TV and broadband Internet services
- Complete choice of FTNS operators
- Direct access to the Satellite Farm in Taikoo Place and Cityplaza

**ACCESSIBLE CAR PARKING SPACES**

Over 1,300



# TYPICAL FLOOR PLAN



- Lettable Floor Area :**  
 Approx. 13,900 - 15,250 sq ft  
 (1,290 - 1,420 sqm)
- Net Floor Area :**  
 Approx. 12,500 - 13,500 sq ft  
 (1,160 - 1,250 sqm)

# LOCATION MAP

