



#### ACCESSIBILITY

Directly connected to Quarry Bay MTR Station

#### TYPICAL LETTABLE FLOOR AREA

Approx. 21,000 sq ft (1,950 sqm)

#### NO. OF OFFICE FLOORS

59

#### TYPICAL FINISHED FLOOR TO FALSE CEILING HEIGHT

Clear headroom 2.925 - 3.925 m (9 ft 7 in - 12 ft 10 in)

#### RAISED FLOOR VOID (CLEAR)

150 mm (6 in) with 100 mm (4 in) clear void

#### FLOOR LOADING

3 + 1 kPa with up to 7.5 + 1 kPa within 3 m around the core wall

#### TRUNKING

A cableway system within the false ceiling

#### 24-HOUR ACCESS

A fully integrated proximity security card access control system to provide access control and logging to car park entrance, passenger / shuttle / car park & service lifts, all washrooms and executive toilets

#### AIR-CONDITIONING

Variable Air Volume system (VAV) with Direct Digital Control (DDC)

#### LIFTS

28 passenger lifts, 6 shuttle lifts, 2 service lifts and 1 car park lift

#### TENANTS' STANDBY ELECTRICAL PROVISION

- Two 1,800 kVA diesel generators for tenants' back-up power supply
- Two 2,000 kVA diesel generators for life safety equipment and essential lighting
- Two 1,800 kVA diesel generators for essential building services

#### COMPUTER ROOM COOLING

Dedicated 24-hour chilled water supply with backup generator

#### TELECOMMUNICATIONS PROVISIONS

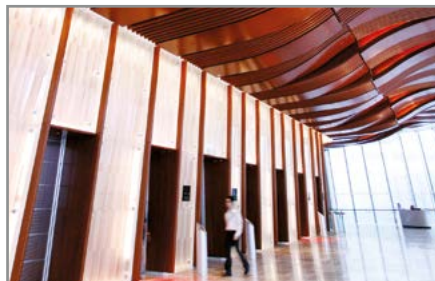
- Dual lead-ins and risers
- Full Cat.5e and fibre optic cabling
- Access to terrestrial, cable, broadband and satellite television channels
- Full mobile telephone coverage throughout the building, lifts, car park and back-of-house areas
- Complete choice of FTNS operators
- Direct fibre connectivity to all other buildings in Taikoo Place and Cityplaza including data centres and global carriers
- Wi-Fi connectivity at lobbies and plaza level
- Direct access to the Satellite Farm in Taikoo Place and Cityplaza
- Trunking for tenants' own data cables between floors

#### ACCESSIBLE CAR PARKING SPACES

Over 1,300

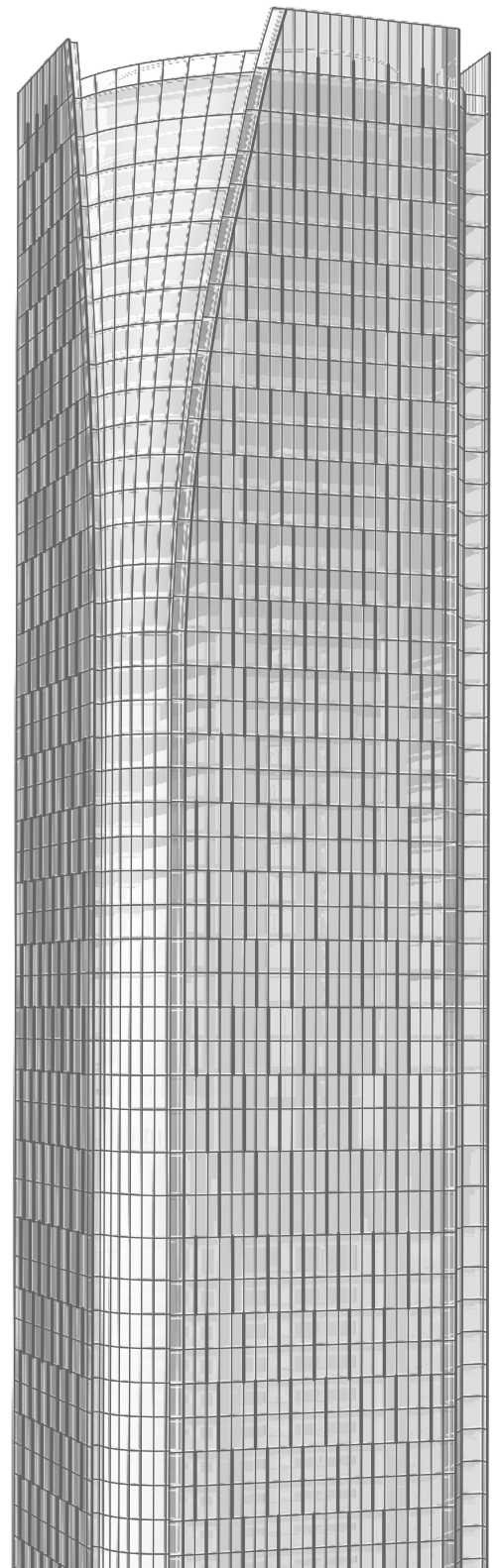
#### ENVIRONMENTAL RATING

BEAM (Building Environmental Assessment Method) Rating:  
PLATINUM

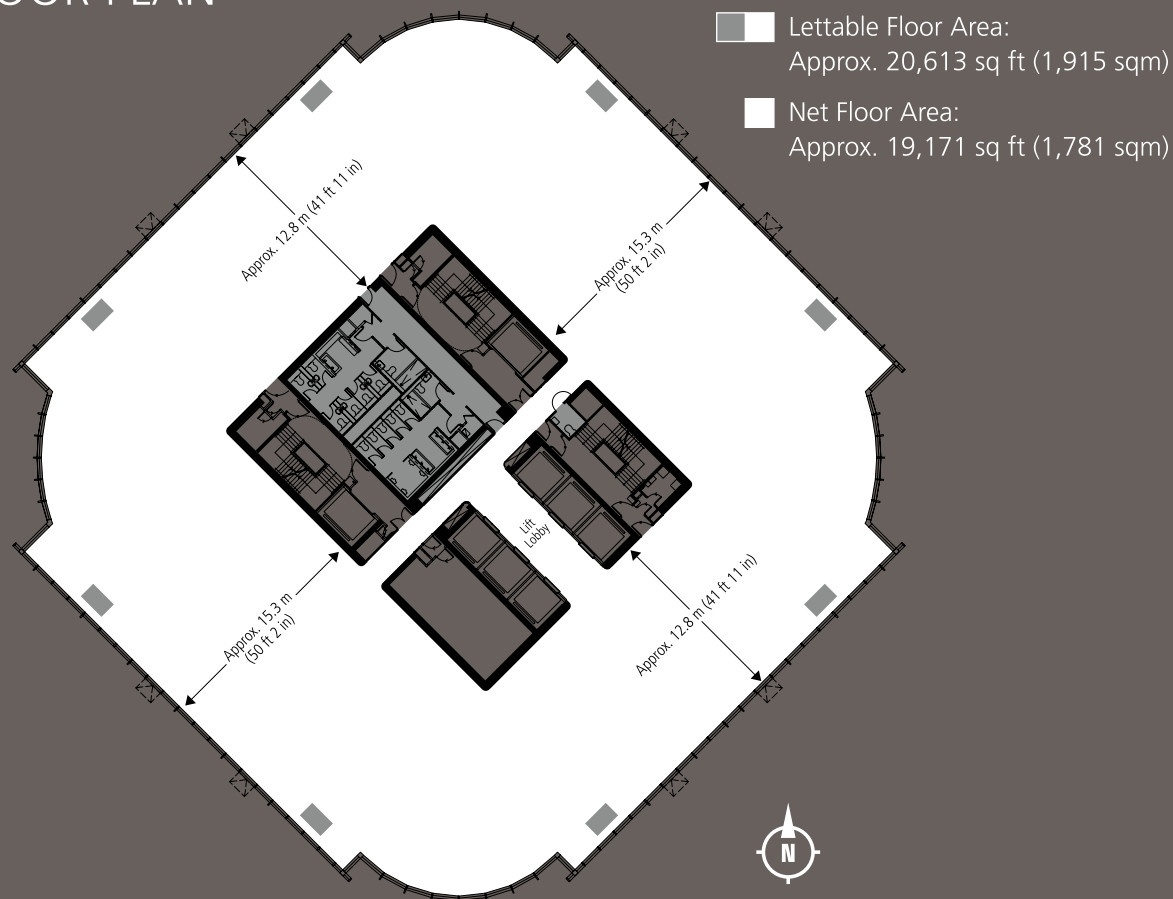


# ONE ISLAND EAST

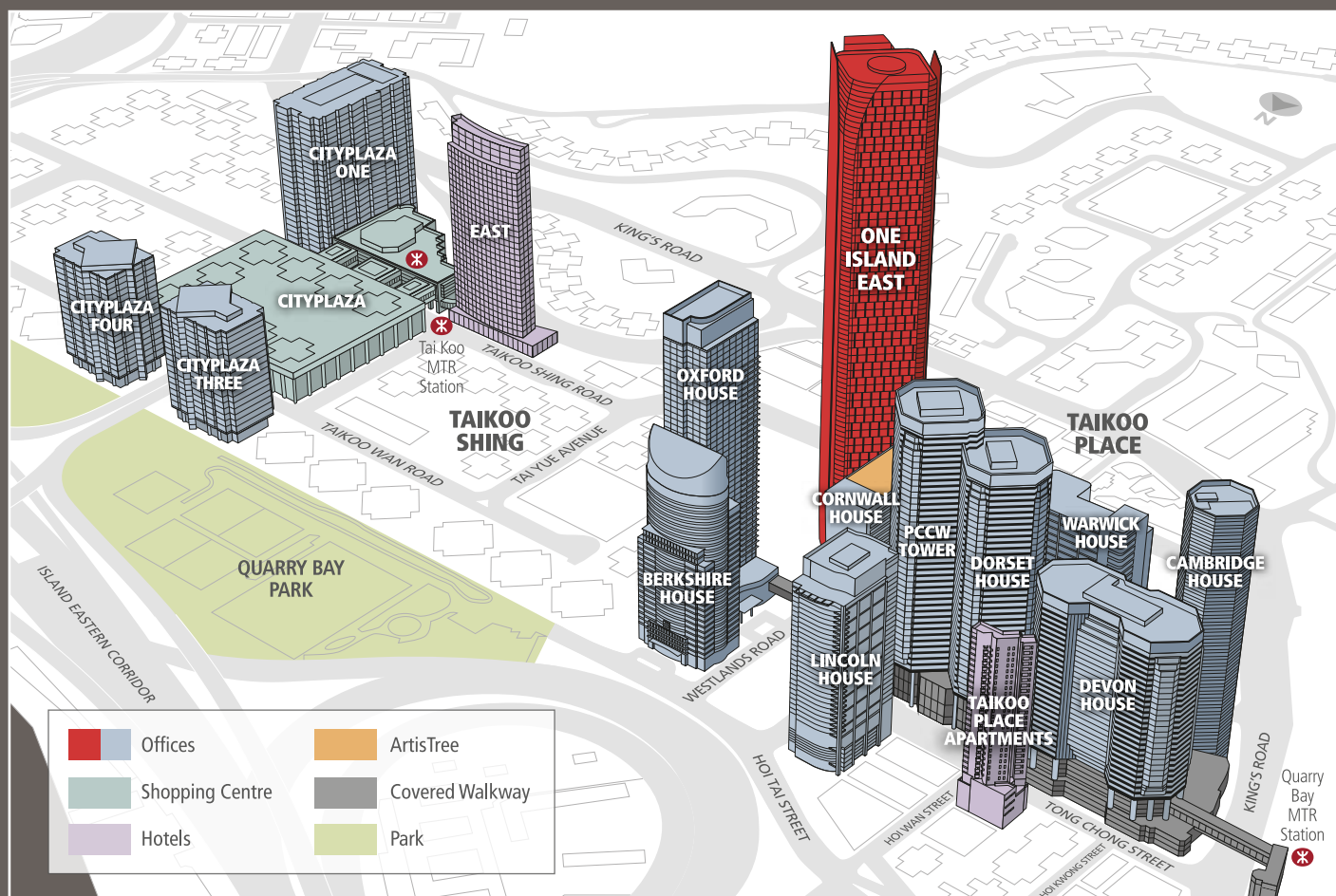
TAIKOO PLACE, 18 WESTLANDS ROAD, QUARRY BAY,  
HONG KONG



## TYPICAL FLOOR PLAN



## LOCATION MAP



Disclaimer: Please note that all information contained in this document is correct at time of going to print. These are for your reference and identification only. There may be technical variations due to, amongst other reasons, site constraints which can only be verified on site. © Swire Properties Limited