

ACCESSIBILITY

Directly connected to Quarry Bay MTR Station

TYPICAL LETTABLE FLOOR AREA

Approx. 25,500 - 27,500 sq ft (2,370 - 2,550 sqm)

NO. OF OFFICE FLOORS

27

TYPICAL FINISHED FLOOR TO FALSE CEILING HEIGHT

Approx. 2.65 m (8 ft 8 in)

FLOOR LOADING

Approx. 5 kPa (100 lbs / sq ft)

TRUNKING

Three-compartment floor, skirting and ceiling trunking

24-HOUR ACCESS

Card Key system incorporated with the passenger lifts for controlling access to each office floor after office hours

AIR-CONDITIONING

Variable Air Volume system (VAV) with perimeter heating

LIFTS

16 passenger lifts and 2 service lifts

TENANTS' STANDBY ELECTRICAL PROVISION

A 1,500 kVA emergency generator is provided for tenants' essential applications and equipment

COMPUTER ROOM COOLING

Dedicated 24-hour condensing water supply with backup generator

TELECOMMUNICATIONS PROVISIONS

- Dual lead-ins and risers
- Full Cat.5 and fibre optic cabling
- Access to SMATV, cable TV and broadband Internet services
- Complete choice of FTNS operators
- Direct fibre connectivity to all other buildings in Taikoo Place and Cityplaza including data centres and global carriers
- Direct access to the Satellite Farm in Taikoo Place and Cityplaza

ACCESSIBLE CAR PARKING SPACES

Over 1,300

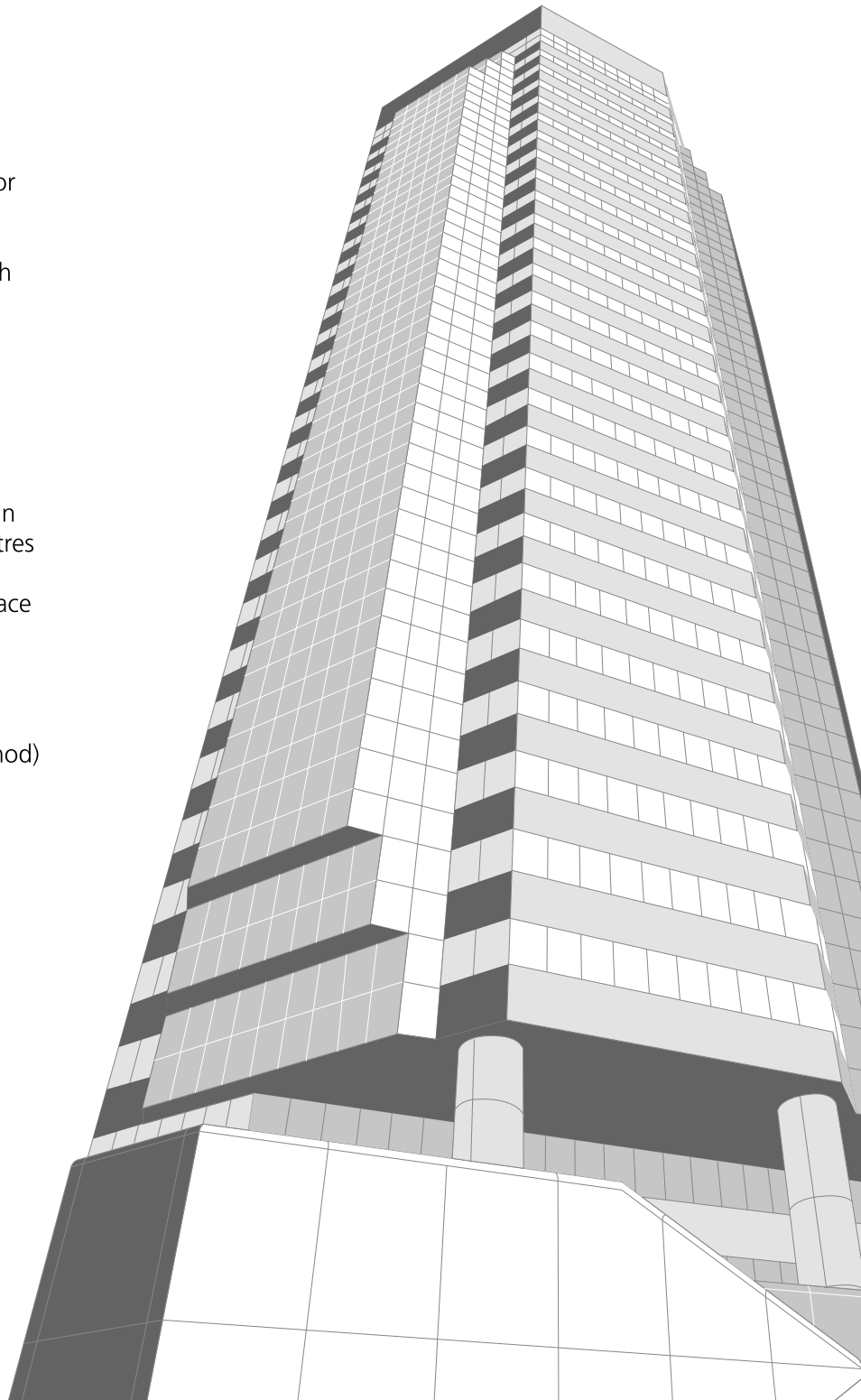
ENVIRONMENTAL RATING

BEAM (Building Environmental Assessment Method)
Rating: PLATINUM

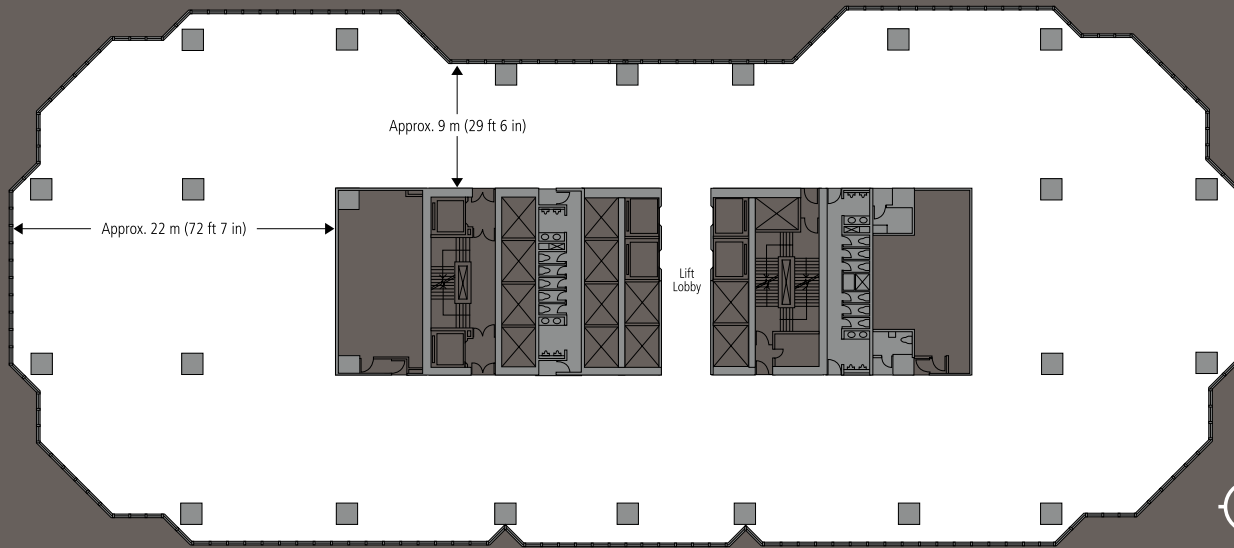


DEVON HOUSE

TAIKOO PLACE, 979 KING'S ROAD,
QUARRY BAY, HONG KONG

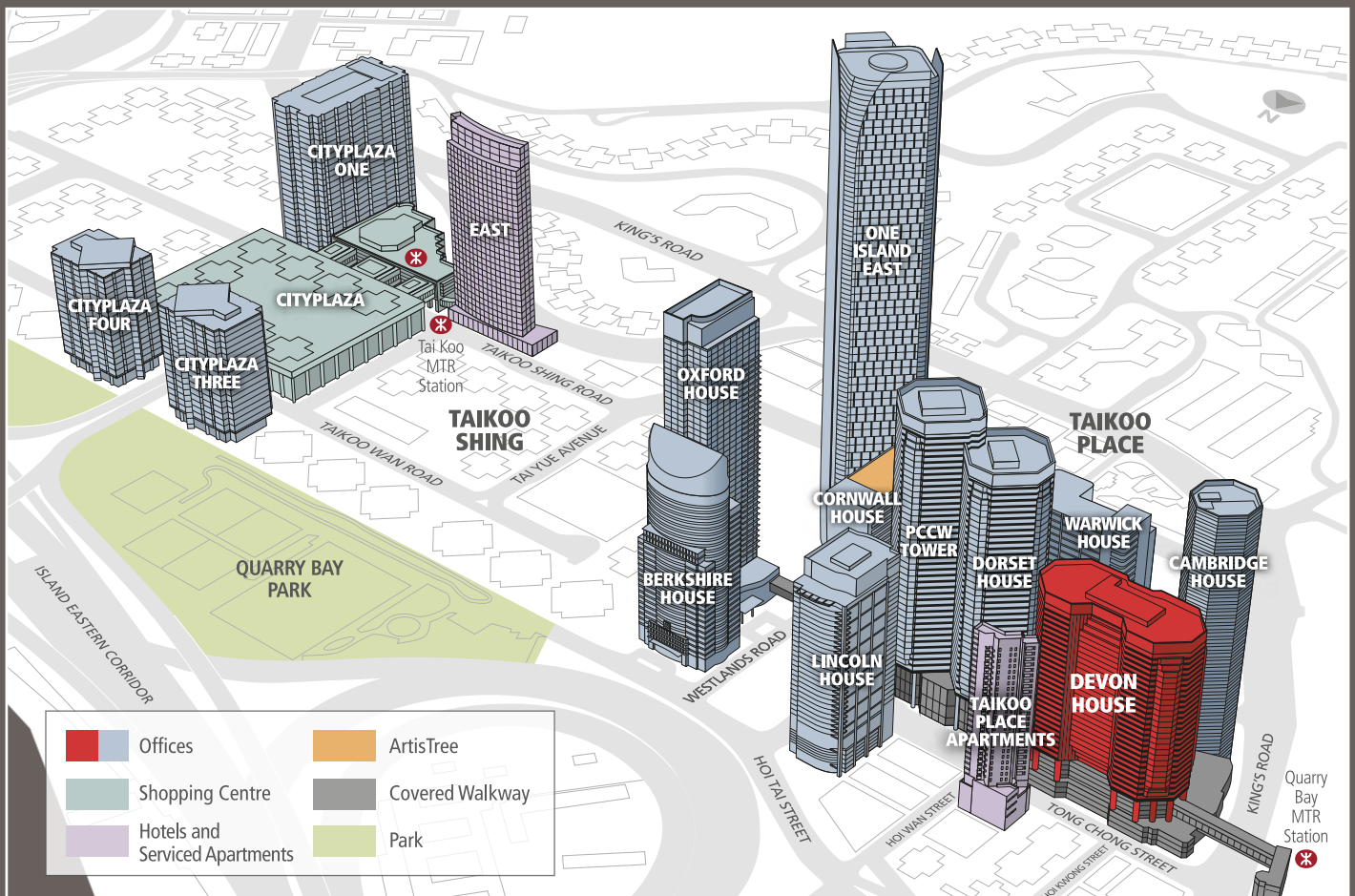


TYPICAL FLOOR PLAN



- Lettable Floor Area : Approx. 25,500 - 27,500 sq ft (2,370 - 2,550 sqm)
- Net Floor Area : Approx. 22,800 - 25,300 sq ft (2,120 - 2,350 sqm)

LOCATION MAP



Disclaimer: Please note that all information contained in this document is correct at time of going to print. These are for your reference and identification only. There may be technical variations due to, amongst other reasons, site constraints which can only be verified on site. © Swire Properties Limited