

ACCESSIBILITY

Close proximity to Quarry Bay MTR station

TYPICAL LETTABLE FLOOR AREA

Approx. 10,900 - 13,800 sq ft
(1,013 sqm - 1,282 sqm)

NO. OF FLOORS

25

TYPICAL FINISHED FLOOR TO FALSE CEILING HEIGHT

Approx. 2.5m (8 ft 2 in)

RAISED FLOOR VOID (CLEAR)

Approx. 150mm (5.9 in)

FLOOR LOADING

Approx. 4 kPa (80 lbs / sq ft)

TRUNKING

Power trunking at ceilings

24 HOUR ACCESS

Card Key system incorporated with the passenger lifts for controlling access to each floor after office hours

AIR CONDITIONING

Single duct Variable Air Volume (VAV) system with Direct Digital Control (DDC) and perimeter heating

LIFTS

10 passenger lifts, 1 car park shuttle lift, and 1 service lift

TENANTS' STANDBY ELECTRICAL PROVISION

A 350 kVA emergency generator is provided for tenants' essential applications and equipment

COMPUTER ROOM COOLING

Dedicated 24-hour chilled water supply

TELECOMMUNICATIONS PROVISIONS

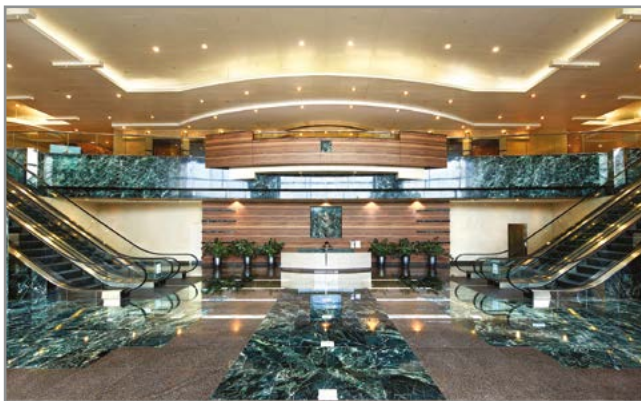
Single risers with dual trunking of Fixed Telecommunications Network Services (FTNS) installations

ACCESSIBLE CAR PARK SPACES

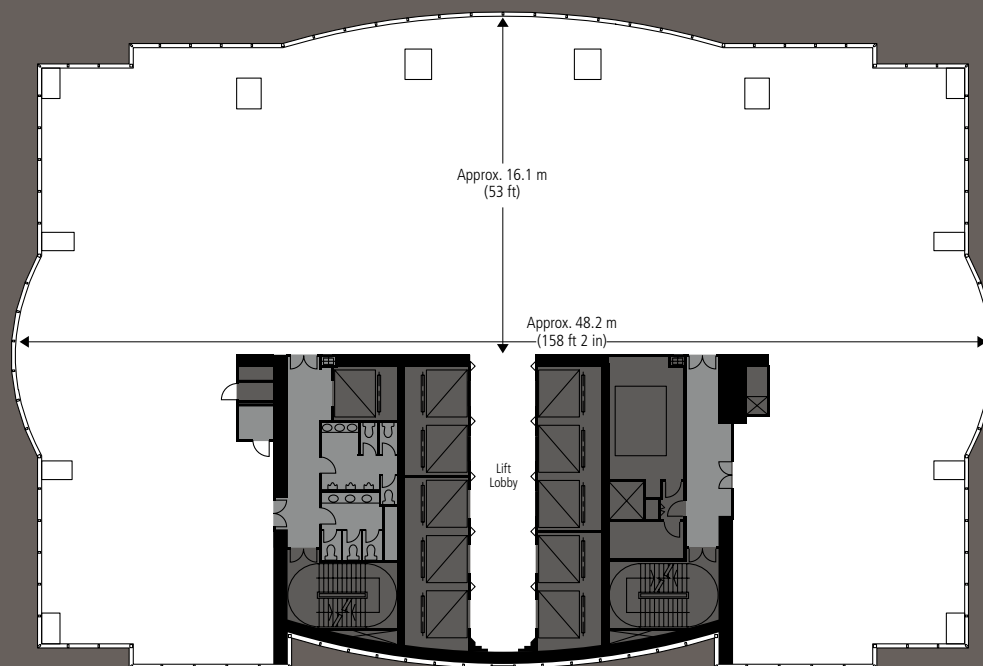
84

BERKSHIRE HOUSE

TAIKOO PLACE, 25 WESTLANDS ROAD, QUARRY BAY,
HONG KONG

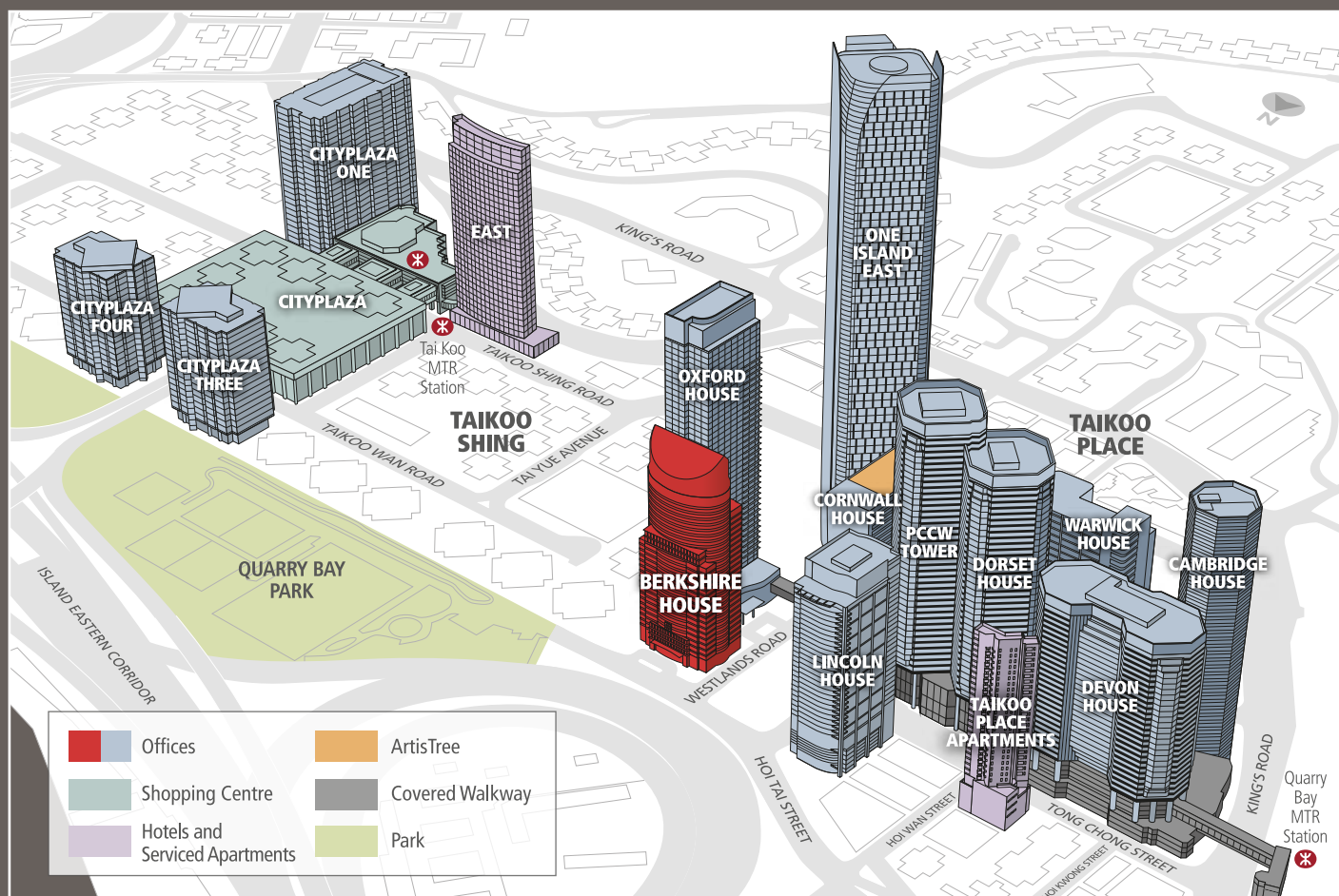


TYPICAL FLOOR PLAN



- Lettable Floor Area : Approx. 10,900 - 13,800 sq ft (1,013 – 1,282 sqm)
- Net Floor Area : Approx. 9,810 – 12,420 sq ft (911 sqm – 1,154 sqm)

LOCATION MAP



Disclaimer: Please note that all information contained in this document is correct at time of going to print. These are for your reference and identification only. There may be technical variations due to, amongst other reasons, site constraints which can only be verified on site. © Swire Properties Limited