

ACCESSIBILITY

Directly connected to
Tai Koo MTR Station

TYPICAL LETTABLE FLOOR AREA

Approx. 18,700 - 19,300 sq ft
(1,740 - 1,790 sqm)

NO. OF OFFICE FLOORS

21

TYPICAL FINISHED FLOOR TO FALSE CEILING HEIGHT

Approx. 2.45 m (8 ft 1 in)

FLOOR LOADING

Approx. 4 kPa (80 lbs / sq ft)

TRUNKING

Three-compartment floor, skirting and ceiling trunking

24-HOUR ACCESS

Card Key system incorporated with the passenger lifts
for controlling access to each office floor
after office hours

AIR-CONDITIONING

Variable Air Volume system (VAV)

LIFTS

8 passenger lifts and 1 service lift

TENANTS' STANDBY ELECTRICAL PROVISION

A 600 kVA emergency generator is provided for
tenants' essential applications and equipment

COMPUTER ROOM COOLING

Dedicated 24-hour chilled water supply with
backup generator

TELECOMMUNICATIONS PROVISIONS

- Dual lead-ins and risers
- Full Cat.5 and fibre optic cabling
- Access to SMATV, cable TV and broadband Internet services
- Complete choice of FTNS operators
- Direct fibre connectivity to all other buildings in Taikoo Place and Cityplaza including data centres and global carriers
- Direct access to the Satellite Farm in Taikoo Place and Cityplaza

ACCESSIBLE CAR PARKING SPACES

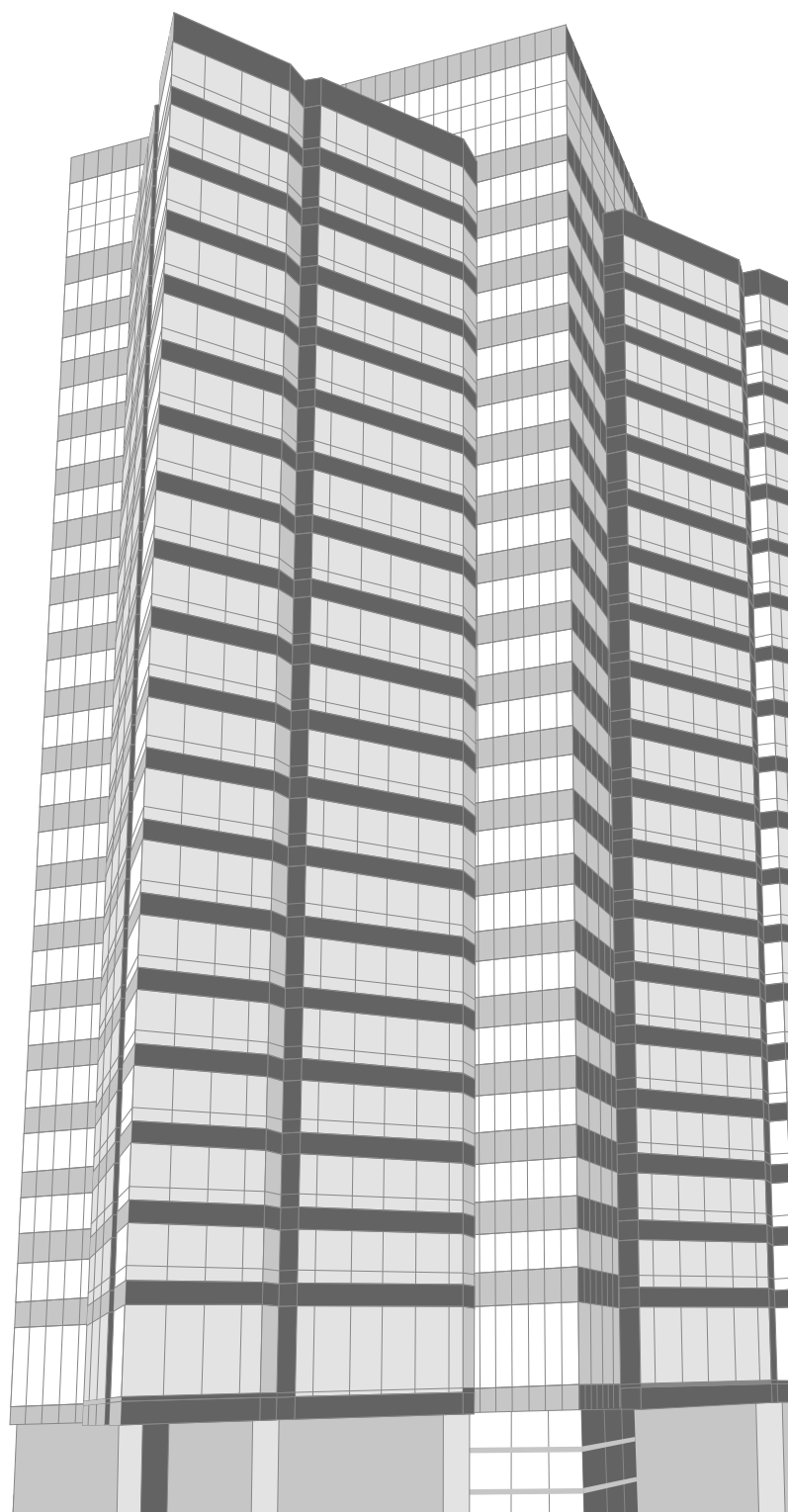
844

ENVIRONMENTAL RATING

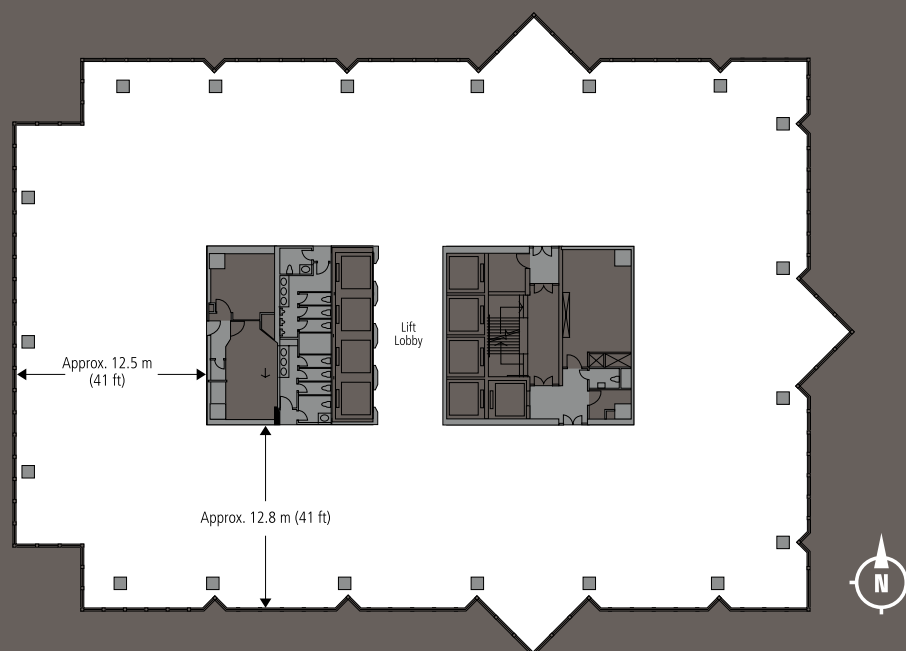
BEAM (Building Environmental Assessment Method)
Rating: PLATINUM

CITYPLAZA THREE

14 TAIKOO WAN ROAD, TAIKOO SHING,
HONG KONG



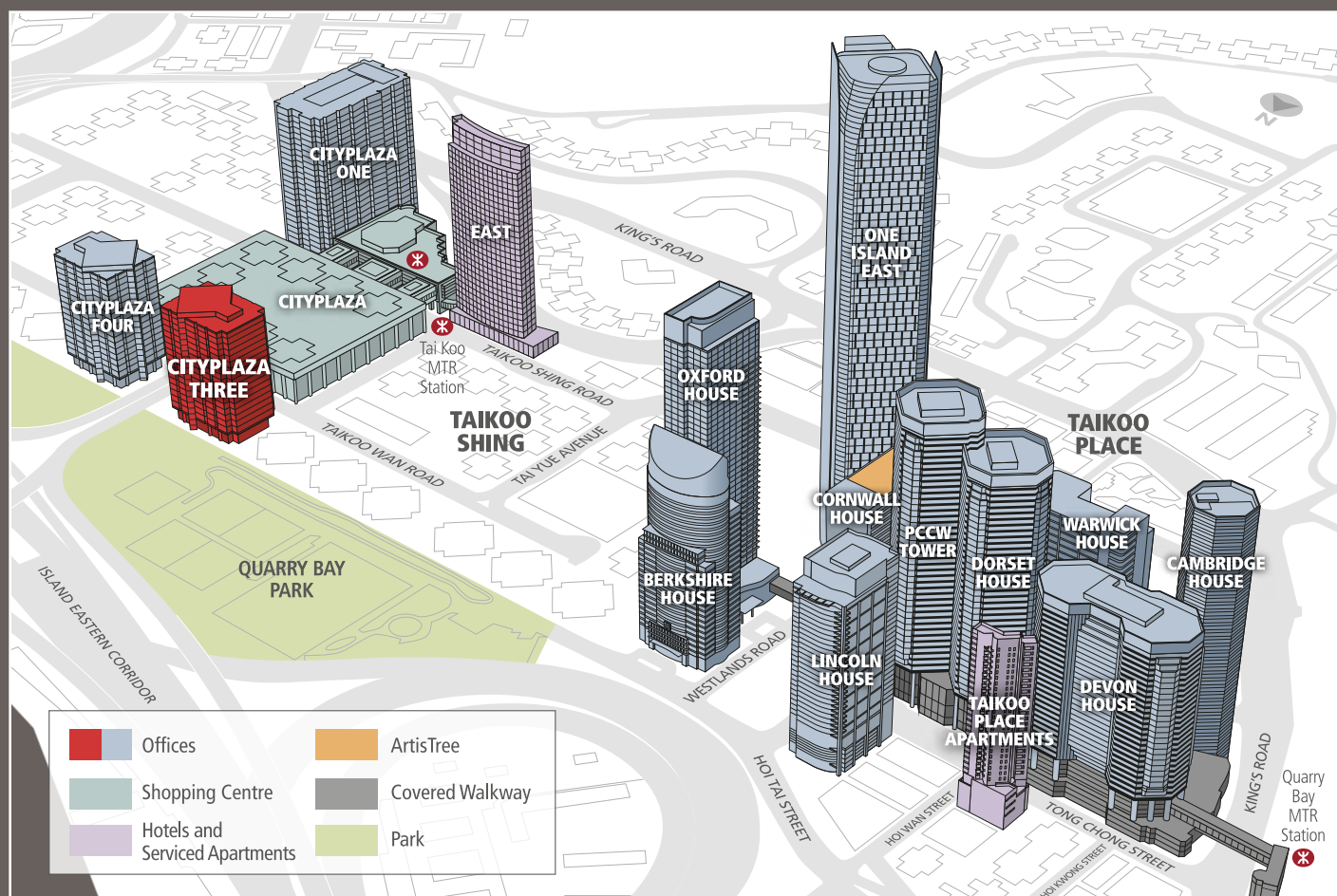
TYPICAL FLOOR PLAN



Lettable Floor Area : Approx. 19,318 sq ft (1,795 sqm)

Net Floor Area : Approx. 18,232 sq ft (1,694 sqm)

LOCATION MAP



Disclaimer: Please note that all information contained in this document is correct at time of going to print. These are for your reference and identification only. There may be technical variations due to, amongst other reasons, site constraints which can only be verified on site. © Swire Properties Limited